

Encore FR Pro Color



Light Efficiency:

12 Lumen/Watt

Light Quality:

CRI: 89.4

Color Temperature:

6044 K

Output: 5004 lm

Peak: 122912 cd

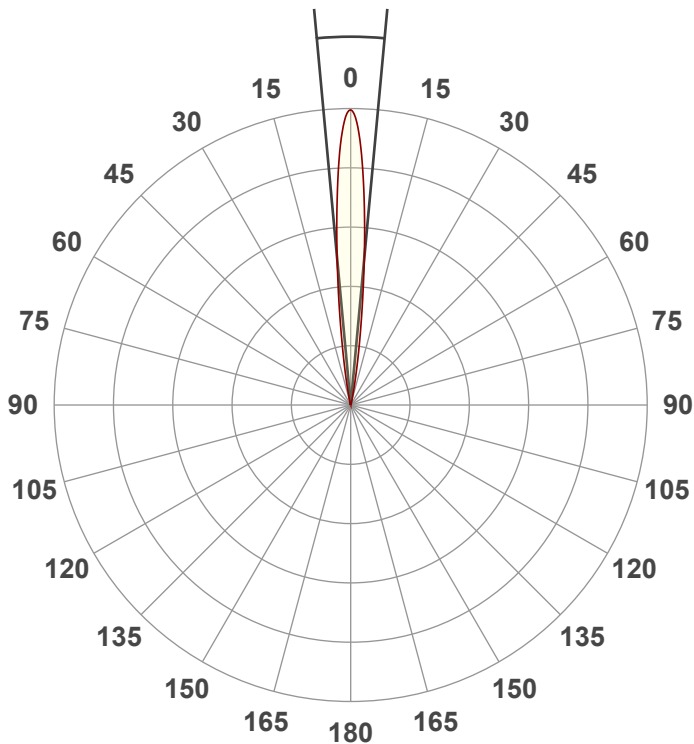
Power: 415 W

PF: 1.0



Beam Angle

10.6°



Test:

Zoom 50% Full On

Date:

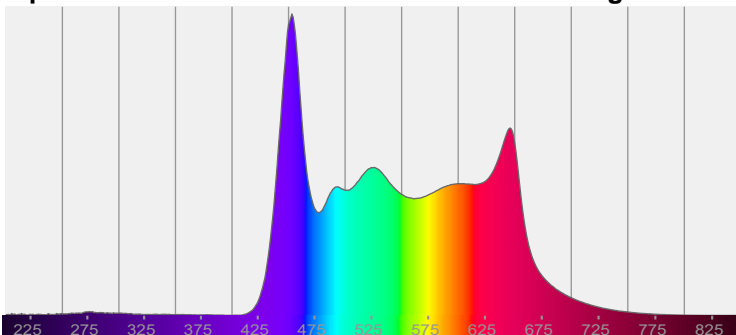
11/12/2021

Note:

CIE 1931
x: 0.323
y: 0.316

Spectra

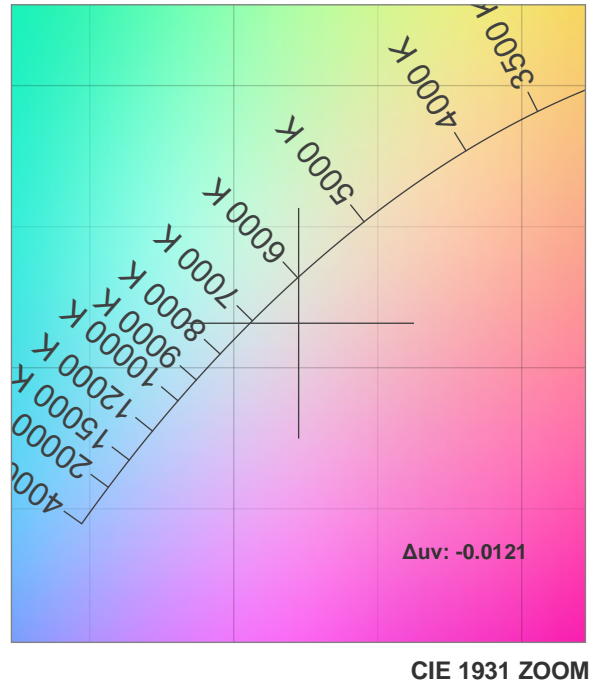
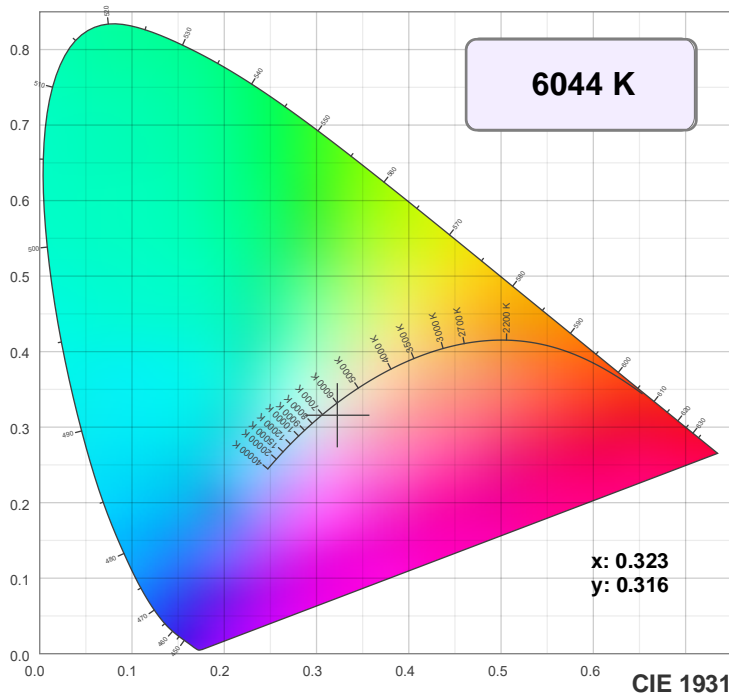
Dominant Wavelength: 829nm



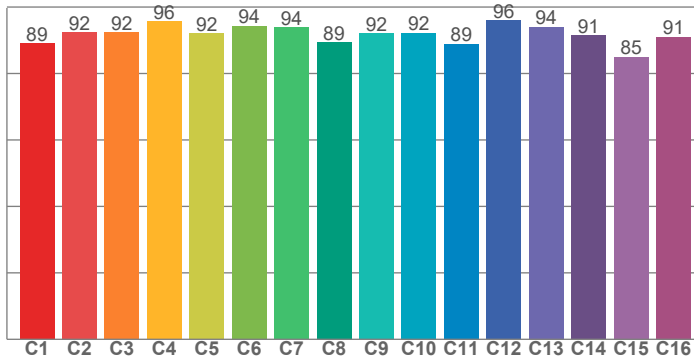
Power

Voltage: 115 V
Current: 3.60 A
Frequency: 0 Hz

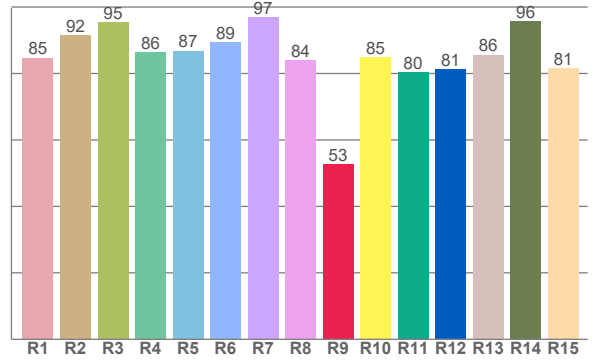
Color Details



TM30: 91.7



CRI: 89.4 (R1-R8)



CRI R values, only R1-R8 are used to calculate final CRI value

R1	R2	R3	R4	R5	R6	R7	R8	R9	R10	R11	R12	R13	R14	R15
84.7	91.6	95.3	86.3	86.8	89.4	97.0	83.9	52.7	84.9	80.4	81.2	85.6	95.8	81.5

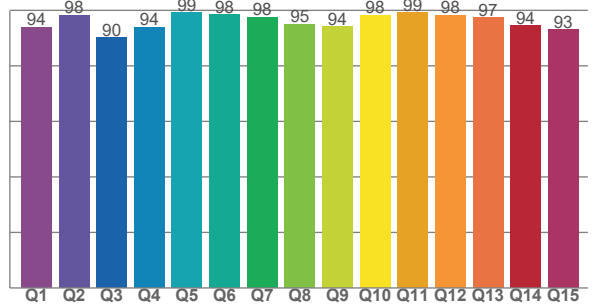
TM30 C values, 16 binned values out of total of 99 C values

C1	C2	C3	C4	C5	C6	C7	C8	C9	C10	C11	C12	C13	C14	C15	C16
89.0	92.4	92.4	95.7	92.0	94.3	93.9	89.4	92.0	92.1	88.9	96.0	94.0	91.4	85.0	91.1

CQS Q values

Q1	Q2	Q3	Q4	Q5	Q6	Q7	Q8	Q9	Q10	Q11	Q12	Q13	Q14	Q15
94.0	98.3	90.1	94.0	99.1	98.4	97.6	95.0	94.2	98.2	99.2	98.3	97.4	94.4	93.1

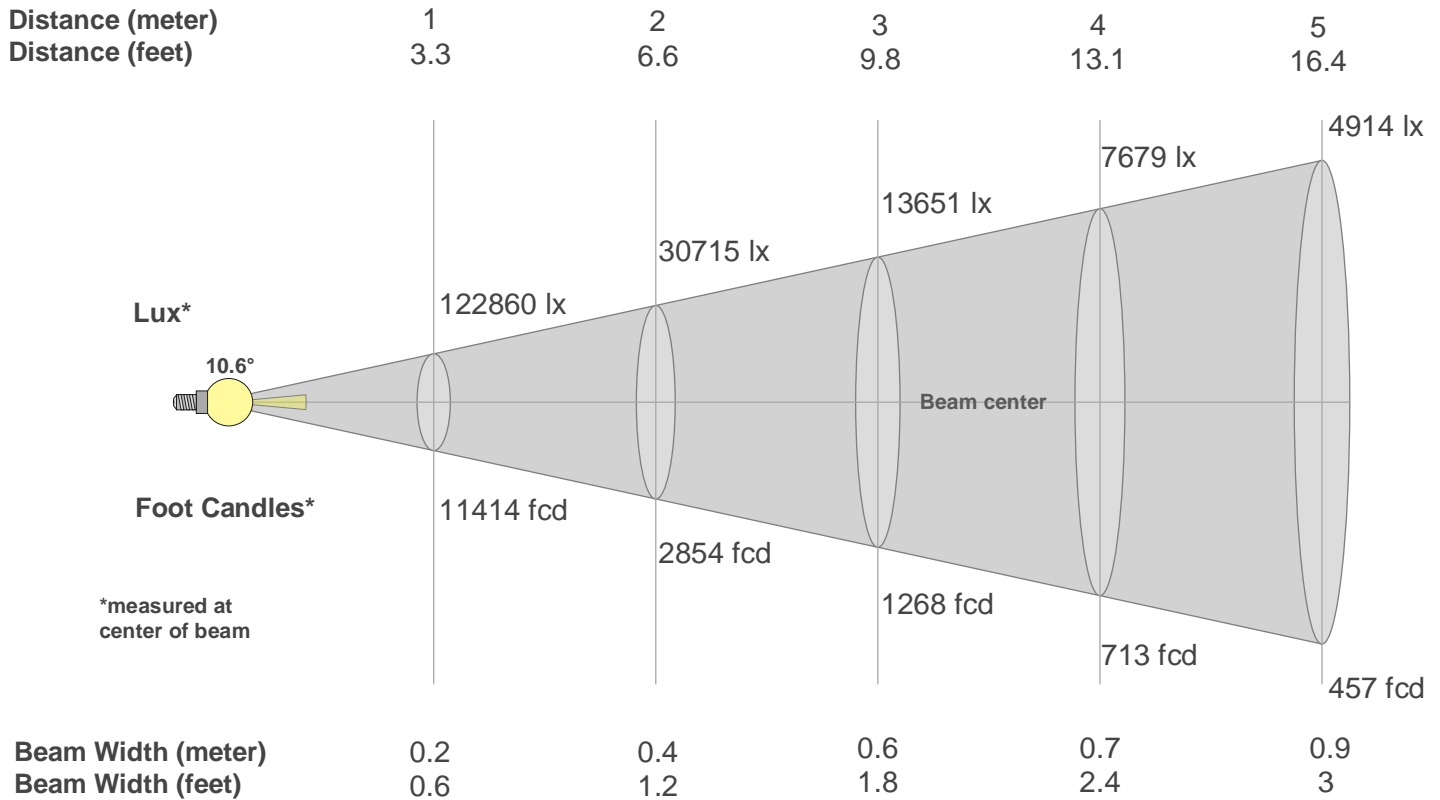
CQS: 95.3



Color Parameters

Color Temperature	Color Rendering Index	Red Component	Color Fidelity	Color Gamut	Color Quality Scale	Color Coordinate CIE 1931	Color Coordinate CIE 1931	Color Coordinate	Color Coordinate	Color Deviation from Black Body
CCT	CRI	CRI R9	TM30 Rf	TM30 Rg	CQS	x	y	u	v	Δuv
6044 K	89.4	52.7	91.7	105.8	95.3	0.323	0.316	0.210	0.308	-0.0121

Beam Details



Beam Intensities from 1-20m

m	1	2	3	4	5	6	7	8	9	10	11	12	13	14	15	16	17	18	19	20
ft	3.3	6.6	9.8	13.1	16.4	19.7	23	26.2	29.5	32.8	36.1	39.4	42.7	45.9	49.2	52.5	55.8	59.1	62.3	65.6
lx	122860	30715	13651	7679	4914	3413	2507	1920	1517	1229	1015	853	727	627	546	480	425	379	340	307
fcd	11414.1	2853.5	1268.2	713.4	456.6	317.1	232.9	178.3	140.9	114.1	94.3	79.3	67.5	58.2	50.7	44.6	39.5	35.2	31.6	28.5

Intensities in 0° C-plane

0°	1°	2°	3°	4°	5°	6°	7°	8°	9°	10°	11°	12°	13°	14°	15°	16°	17°	18°	19°
123K	120K	111K	98K	82K	66K	50K	37K	25K	17K	11K	7K	4K	3K	2K	1K	1K	1K	0K	0K
100%	98%	91%	80%	67%	54%	41%	30%	21%	14%	9%	5%	3%	2%	1%	1%	1%	0%	0%	0%

Intensities in 90° C-plane

0°	1°	2°	3°	4°	5°	6°	7°	8°	9°	10°	11°	12°	13°	14°	15°	16°	17°	18°	19°
123K	120K	111K	98K	82K	66K	50K	37K	25K	17K	11K	7K	4K	3K	2K	1K	1K	1K	0K	0K
100%	98%	91%	80%	67%	54%	41%	30%	21%	14%	9%	5%	3%	2%	1%	1%	1%	0%	0%	0%

Intensities in 180° C-plane

0°	1°	2°	3°	4°	5°	6°	7°	8°	9°	10°	11°	12°	13°	14°	15°	16°	17°	18°	19°
123K	119K	110K	97K	82K	66K	51K	37K	27K	18K	12K	8K	5K	3K	2K	1K	1K	1K	1K	1K
100%	97%	90%	79%	67%	54%	41%	30%	22%	15%	10%	6%	4%	2%	2%	1%	1%	1%	1%	0%

Intensities in 270° C-plane

0°	1°	2°	3°	4°	5°	6°	7°	8°	9°	10°	11°	12°	13°	14°	15°	16°	17°	18°	19°
123K	119K	110K	97K	82K	66K	51K	37K	27K	18K	12K	8K	5K	3K	2K	1K	1K	1K	1K	1K
100%	97%	90%	79%	67%	54%	41%	30%	22%	15%	10%	6%	4%	2%	2%	1%	1%	1%	1%	0%

Beam Angle 50%	Field Angle 10%	Cutoff Angle 2,5%	Intensity Ratio in 120° Cone	Intensity Ratio in 90° Cone
10.6°	19.6°	25.5°	100.0%	100.0%